



D Y PATIL
AGRICULTURE
& TECHNICAL
UNIVERSITY

TALSANDE

YOU ARE **IN** **&** SO IT BEGINS



Vision

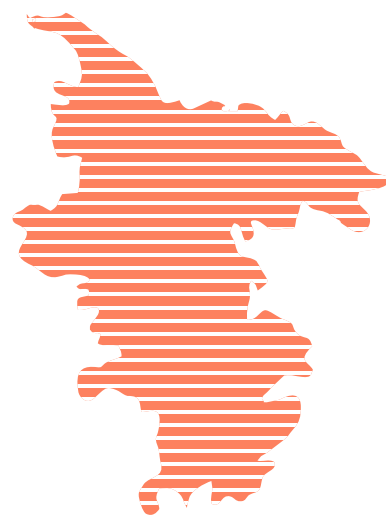
- ▶ To create a world class learning environment which will promote innovation and creativity, **experiential learning** inspired by research, and focuses on regionally, nationally and globally relevant areas.

Mission

- ▶ To provide a diverse, vibrant and inspirational learning environment.
- ▶ To establish the University as a leading experiential learning and research oriented center.
- ▶ To become a responsive University serving the needs of industry and society.
- ▶ To embed internationalization, employability and value-thinking.
- ▶ To become a place of research for agriculture, engineering, commerce and management education.

We are DYP-ATU

The layout of the campus has been conceived to meet the academic, administrative, sports/recreational, residential and other requirements of a growing University. Today 150 acres of it is a self-sustained lush green campus with rest of the area developed for academics, hostels, sports and other infrastructure facilitating student life. The campus is covered with a large number of age-old trees, which provide shade and beauty, and the peaceful surrounding make for a very invigorating environment for serious studies and research. It also houses academic institutes, hostels for boys and girls, indoor and outdoor sports complex, 15 buses being deployed for students' commutation and their health care facility being met through a dedicated hospital and clinic on the campus and also at D.Y. Patil Medical College, if further medical intervention be needed. Apart from syllabus-based learning, the College provides ample opportunity for participation in various co-curricular, extra-curricular activities and sports activities.



Talsande Campus

Located in the suburbs of Kolhapur, 22kms away, the Talsande campus was originally 205 acres of barren stretch purchased by President of D.Y. Patil Group, Dr. Sanjay Patil in 1989. It took the vision of the Group's president and his endless efforts to convert an unproductive wasteland into a green belt.

“We want to make you the artist, engineers and entrepreneurs of tomorrow”

Welcome to D. Y. Patil Agriculture and Technical University of Higher Education!

D Y Patil Group has been leading the curve in all verticals of education across the state since decades. At our campuses, you will not only learn your selected field from renowned experts but will also be meeting people from multitude of cultures and states as we are a nationally acclaimed education hub. Go out, meet people, make connections as they will be your current and future support systems. By the end of your course, I ensure you will have an edge over the others to take on the world. Here at DYP-ATU, we do not create rote learned stereotypes. We give you the liberty to amass knowledge as much as you can so you can create new dimensions to your chosen subjects.

Make the most of your time while learning here. Prepare yourself to conquer the world, the sky is your only limit.

With best wishes,

Dr. Sanjay D. Patil

President,

D. Y. Patil Group

Chancellor,

– D. Y. Patil Agriculture and Technical University, Talsande

– D. Y. Patil Education Society

(Institution Deemed to be University) Kolhapur

– D. Y. Patil International University, Akurdi

Why study in DYP-ATU?



Green Campus

University has endless green space, plenty of natural light and natural ventilation. A calm and serene environment enhances productivity and relieves stress.



Experiential learning

Integrate and apply academic skills to understanding practical experiences and problems found in real world

50%

classroom
teaching

30%

laboratory
practical

20%

experiential
learning



Wide range of courses

The University offers one of the most comprehensive range of study programs in the state, with more than 40 courses offered at undergraduate and postgraduate level.



Learn from the best

Our academic staff are your professors, tutors and mentors and will guide you through your degree and prepare you for your career.



Equipment's & Facilities

You will learn in state-of-the-art facilities with industry standard equipment's which gives you an edge over others.



Future shaping

Experience first class teaching, an inclusive learning environment, outstanding facilities and resources, and ongoing support to help you realise your goals.



Getting you work ready

Strong focus on preparing graduates for the world of work.

From the classroom (Internal Exposure)

- Multi-disciplinary programmes, projects and a student-centred pedagogy
 - Use of multimedia (PowerPoint presentation, audio and visuals)
 - Case studies, games, simulations, group activities, role play
 - Guest lectures
 - On-line teaching on Microsoft teams platform
 - Scenario analysis, group discussions, quizzes, one on one discussion
 - Mentoring and coaching
-

Beyond the classroom (External Exposure)

- Industry visits
 - Conferences
 - Live projects
 - Seminars / Summits
 - Internships
 - Development programmes
 - Special workshops
 - Learning exchange programmes
 - Research-based projects
-

Assessment Methods

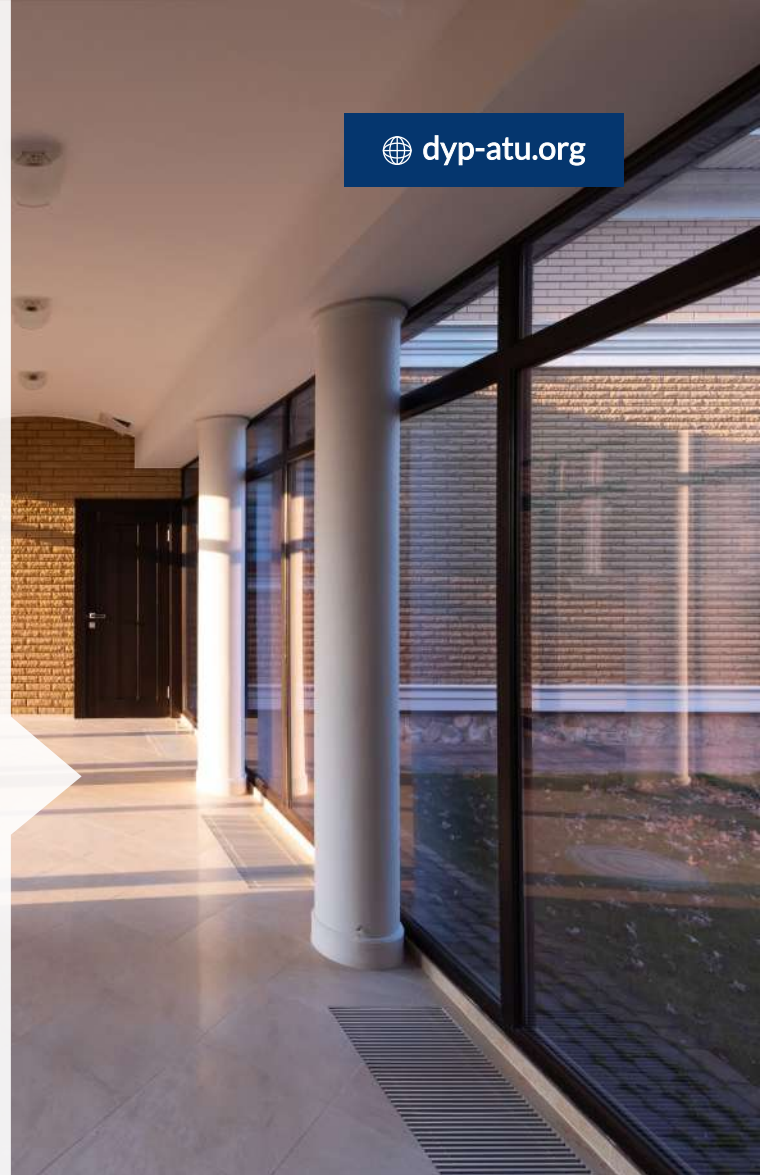
- Quiz sessions
- Assignments
- Field study reports
- Periodic tests
- Article reviews
- Discussion forums
- Case analysis
- Group discussions

Hostel

Accommodation is an important consideration while you are studying at the University. Living on campus is a great way to get to know people and immerse yourself in college life. The university provides a separate hostel facility for both girls and boys.

Facilities:

- ▶ 24hrs Hot & cold water
- ▶ Purified drinking water
- ▶ Wi-fi & Newspapers
- ▶ CCTV
- ▶ TV Sets in common area
- ▶ Common washing machine units at Girls hostel
- ▶ Hygienic mess serving food



Transport

The University offers a safety-oriented transportation service to the students, faculty, and staff to commute between the city and campus on the notified bus timings and defined routes. The University has a fleet of 11 buses dedicated to the shuttle service which are driven by professional drivers.

Buses available from the following locations to the University:

- ▶ Kolhapur
- ▶ Bambwade
- ▶ Ichalkaranji
- ▶ Kagal
- ▶ Atigre
- ▶ Koregaon
- ▶ Sangli
- ▶ Islampur



Find the right type of course for you

We offer a wide variety of undergraduate & postgraduate study options across our campus.

UG, PG and Ph.D Programs starting from year 2021-22 in

Engineering & Technology

- ▶ B.Tech Computer Science & Engineering
- ▶ B.Tech Computer Science & Engineering (Artificial Intelligence & Machine Learning)
- ▶ B.Tech Computer Science & Engineering (Data Science)
- ▶ B.Tech Food Technology
- ▶ B.Tech Agricultural Engineering
- ▶ Bachelor of Computer Applications
- ▶ **M.Tech Courses in all above disciplines**

Arts & Humanities

- ▶ B.A. (Communication & Media)
- ▶ B.A. (Economics)
- ▶ B.A. (Journalism)
- ▶ B.A. (Liberal Arts)
- ▶ B.A. (Media Studies)
- ▶ **M.A. Courses in all above disciplines**

Commerce

- ▶ B.Com Honours
- ▶ B.Com Finance & Accounting
- ▶ B.Com International Finance
- ▶ B.Com Strategic Finance
- ▶ **M.Com Courses in all above disciplines**

Management

- ▶ BBA Honours
- ▶ BBA Finance & Accounting
- ▶ BBA International Finance
- ▶ BBA Travel & Tourism Management
- ▶ BBA Marketing & Sales
- ▶ BBA Agro Business Management
- ▶ BBA Digital Marketing
- ▶ B.Sc Data Science
- ▶ B.Sc Economics and Business
- ▶ **MBA Courses in all above disciplines**

D.Y. Patil Educational City,
Wathar-Warnanagar, Talsande Dist Kolhapur MH
Call: **9699339917, 9699330619, 9699334088**

Visit: **www.dyp-atu.org**
E-mail: **admission@dyp-atu.org**

 **@dyp.atu**

 **dyp_atu**

 **@dyp_atu**